

INDUSTRIAL KNIVES FOR THE STEEL INDUSTRY



KINETIC®



cuts and have to be replaced. By comparison, every inch of our knives are subjected to the same heat-treating level, which means they are thru-hardened. Looking at the micro-structure under a powerful microscope, you will clearly see the difference between an ordinary blade and a thru-hardened blade.

“We offer the industry’s most stringent manufacturing and testing processes, coupled with over 55 years of experience.”

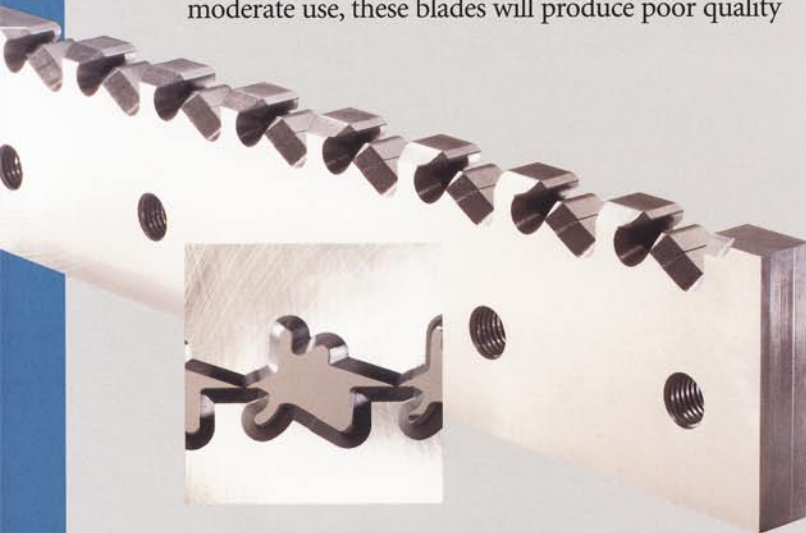
We also have highly experienced machinists making your knives, with trained professionals providing technical support, and an engineering staff continuously exploring ways to improve blade performance at your facility. That’s because we invest the time to understand your entire operation before we offer a solution. It all adds up to less downtime of production equipment. And as you well know, you can never get downtime back.

Just-in-time delivery – another reason for teaming with us. We’re able to hold your inventory at our facilities and release knives as you need them, or on a set schedule. If you need a custom blade quickly, we often can make it and have it delivered to your location faster than the competition.

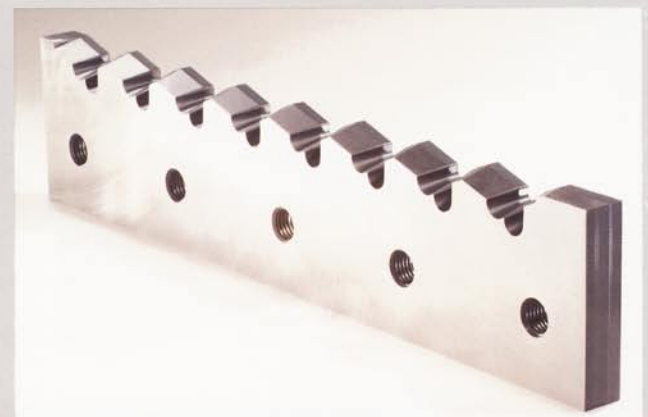
See inserts with some of the knives made for your industry.

Just like a light bulb, our knives are designed to be removed from the box, easily installed, and immediately begin performing problem-free. This results from the industry’s most stringent manufacturing and testing processes, coupled with over 55 years of experience serving thousands of customers worldwide.

You will never mistake our blades for low-cost alternatives that have a tough exterior, but soft interior. After moderate use, these blades will produce poor quality

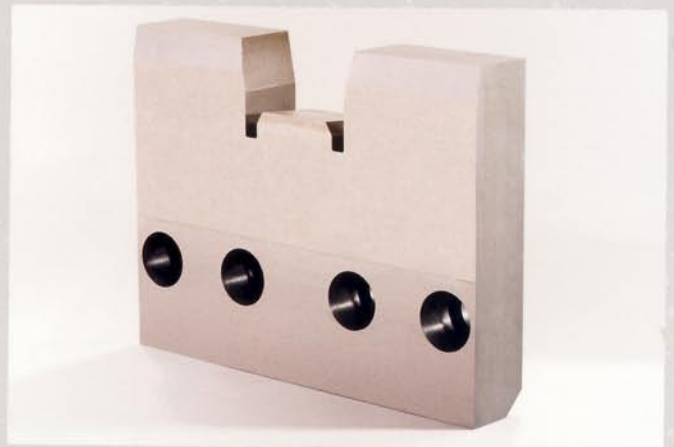
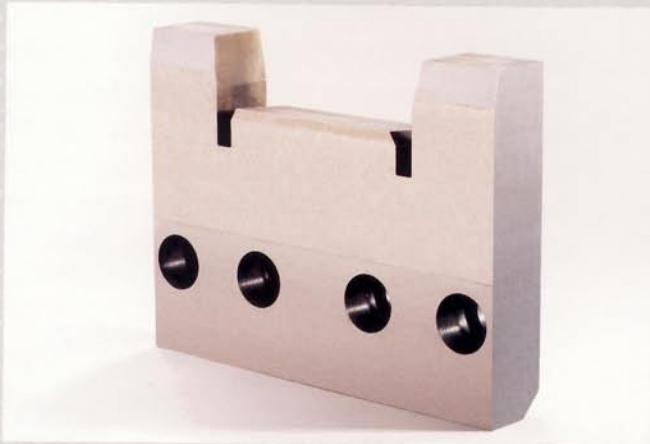


LOWER “T” POST BLADE



UPPER “T” POST BLADE

INDUSTRIAL KNIVES FOR THE STEEL INDUSTRY



STRUCTURAL SHEARS



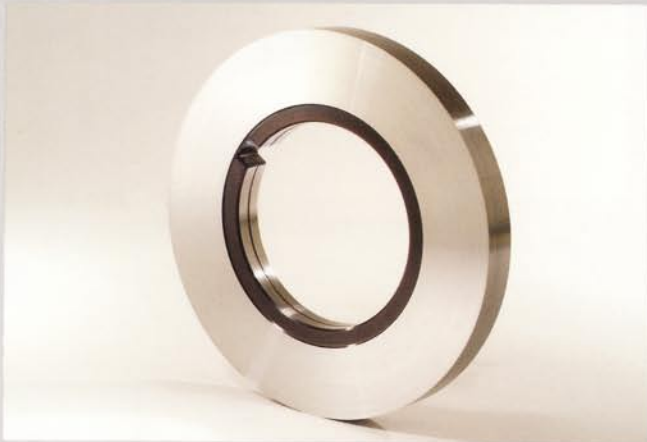
FLYING SHEAR BLADES



FLYING SHEAR BLADES



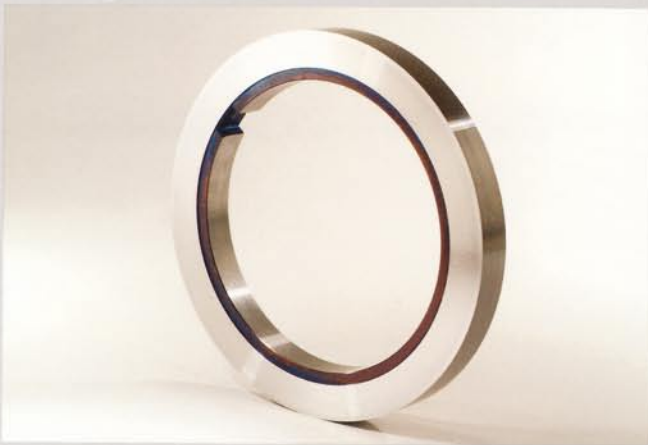
KINETIC



KINETIC NO-GRIND SIDE TRIMMER
12" to 33" in diameter



SLITTER



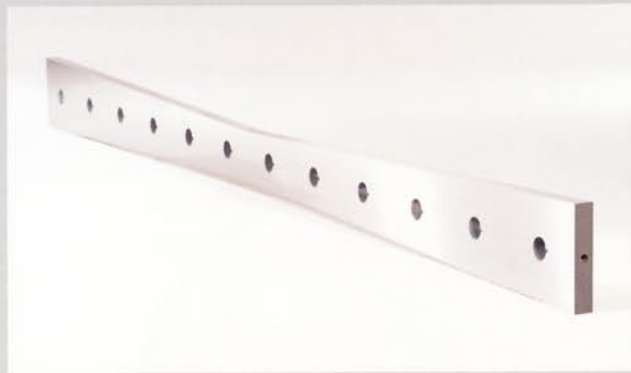
SIDE TRIMMER FOR CUTTING STAINLESS



TUBE CUT-OFF KNIFE
5" to 8-1/2" in diameter



SCRAP CHOPPER



BOWTIE SHEAR BLADE

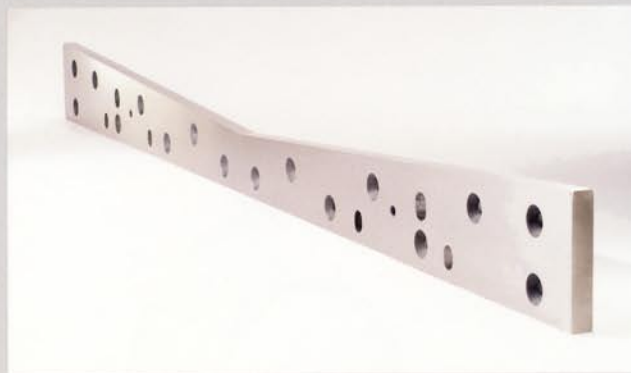
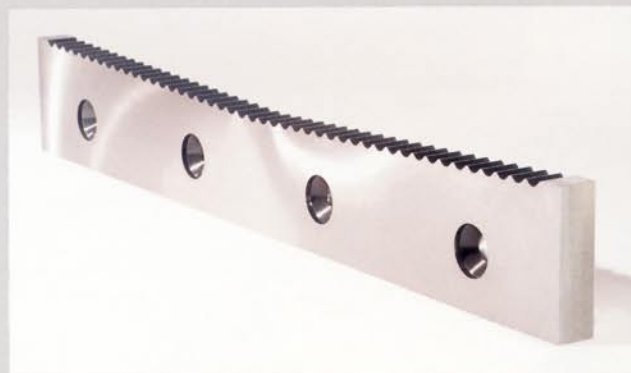


PLATE SHEAR BLADE



**PROFILE KNIVES
BAR SHEAR BLADE**



LUG BLADE FOR PLATE TRIMMING



**PROFILE KNIVES
ANGLE SHEAR BLADES**



KINETIC

P.O. Box 200
Greendale, Wisconsin 53129-0200
USA
Phone +1-414-425-8221
Fax +1-414-425-7927