

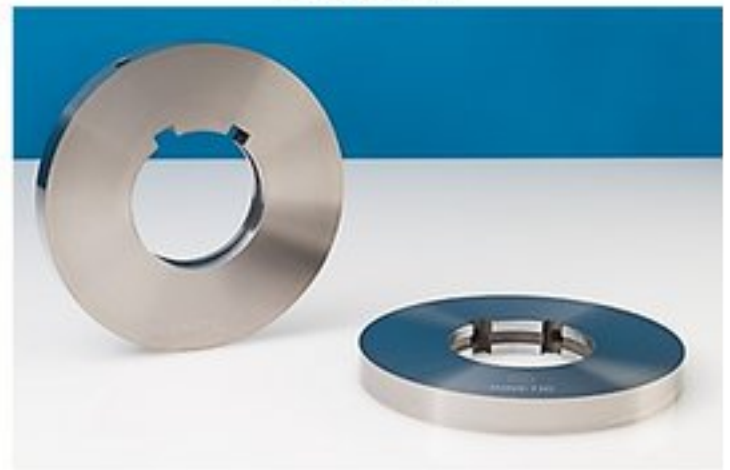
**KINETIC<sup>®</sup>**

**Products for the  
Metals Industry**





**Slitters**



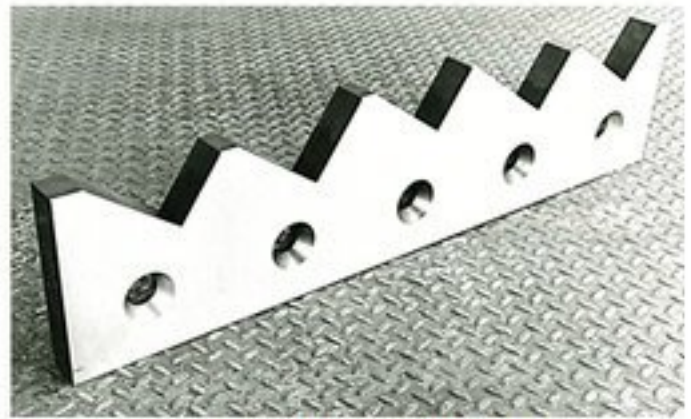
# Slitter Tooling



**Slitters, Spacers, Rubber Stripper Rings, Separator Disks, Micarta Spacer**



**Channel Shear Blades**  
Cut to your product specifications.



**Angle Shear Blades**  
Available in both even and uneven legs.

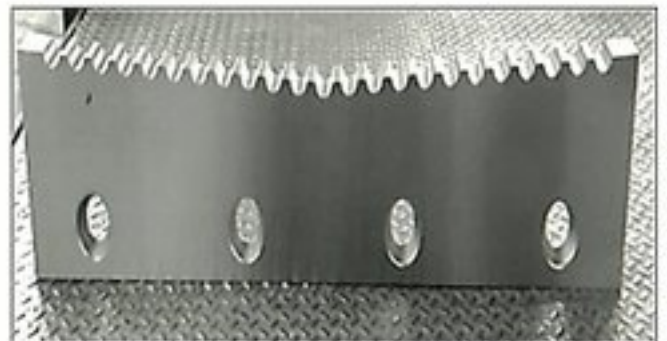
# Profile Steel Shear Blades



**Top & Bottom T Post Shear Blades**  
Designed to your unique profile.



**Hex Shear Blades**

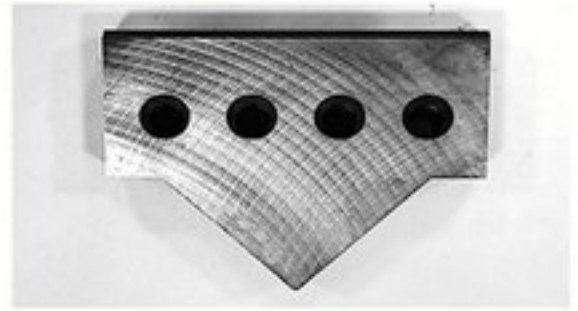


**Round Pass Shear Blades**

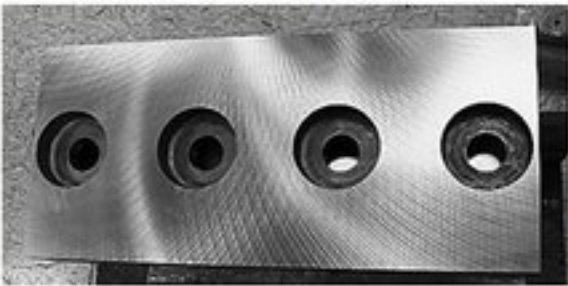




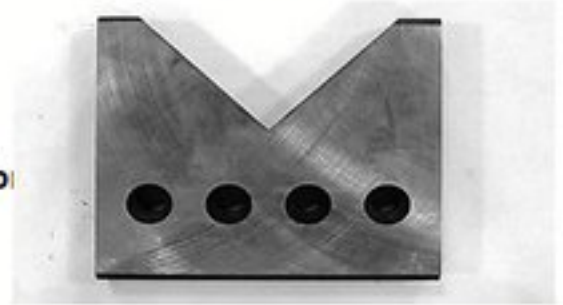
**Various Styles of Scrap Choppers**



**Top  
Even Angle Shear Blade  
Bottom**



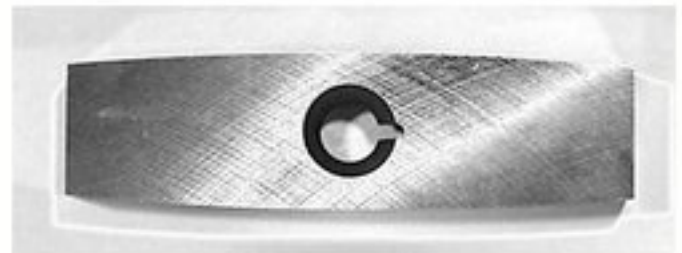
**Shear Blades for  
cutting  
Aluminum**



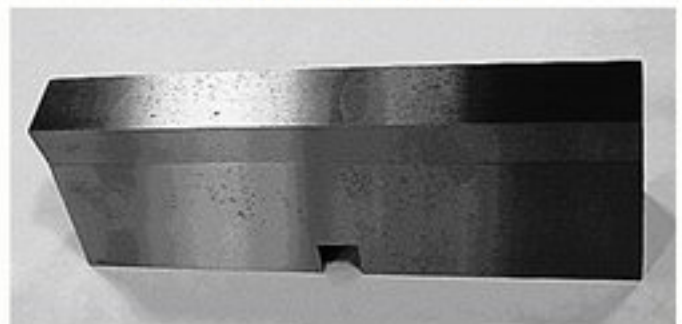
# **Dividing Shears & Scrap Choppers**



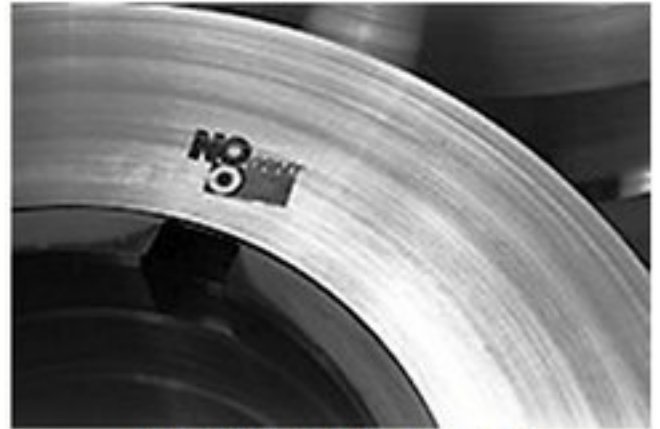
**Wedge Style Scrap Chopper**



**Radius Scrap Chopper**



**Angle Style Scrap Chopper**

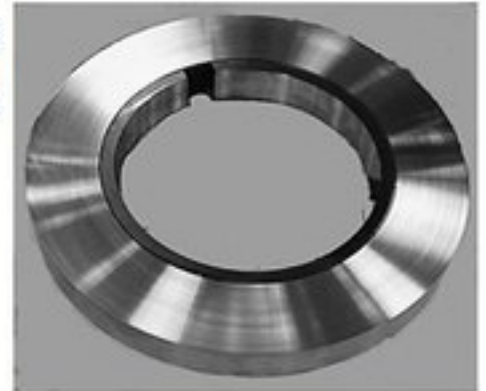


No Grind© Side Trimmer

# Side Trimmers



Used in Trimming  
Thick Gauge Material  
.350" -1.0"



Used in Stainless Steel  
Industry

Used in Aluminum  
Industry





**Male Angle Straightener Roll**



**Mating Angle Straightener Roll**



# Miscellaneous Products



**Crusher Roll**

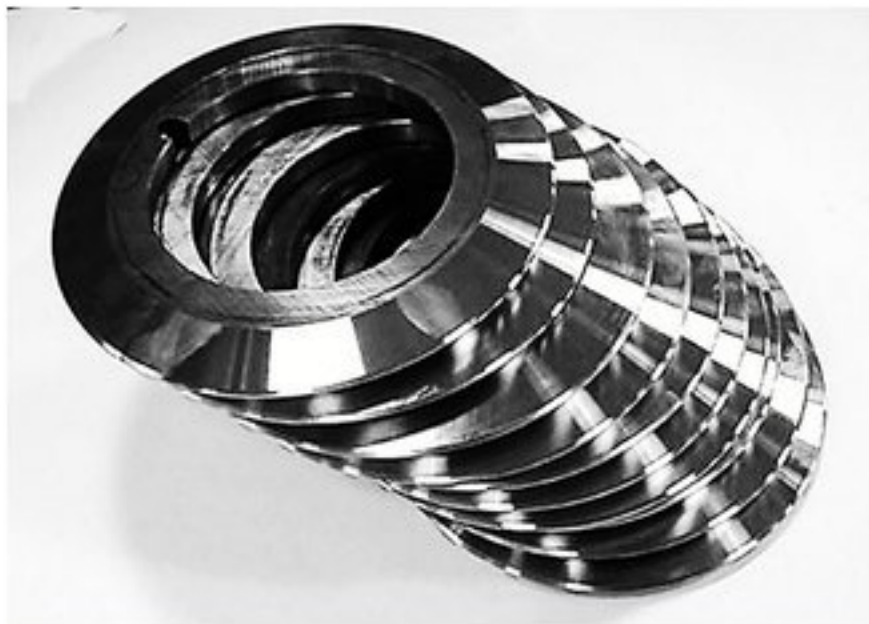


**Chain Roll**



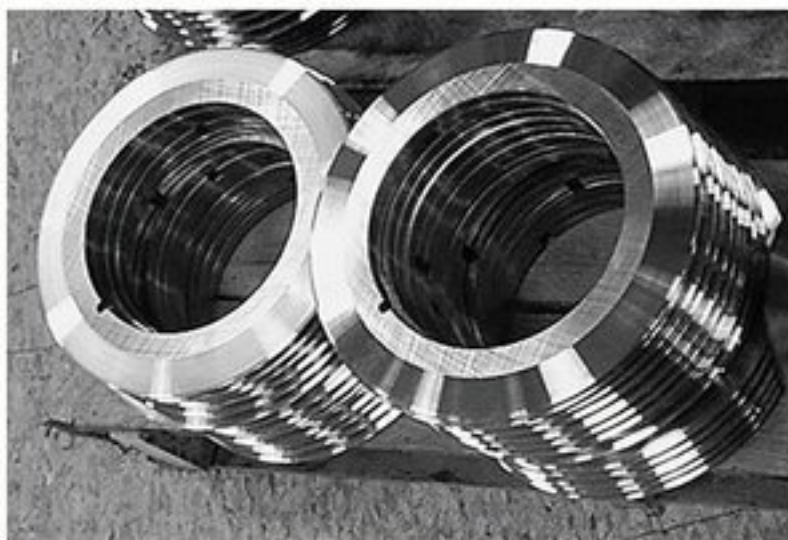
**Guide Rollers**





Used Blades resharpened to as new condition

# Tube Cut Off Knives



Plunge Style Tube Cut Off Knives

**KINETIC**

6775 West Loomis Road  
P.O. Box 200  
Greendale, WI 53129



[www.knifemaker.com](http://www.knifemaker.com)  
[orders@knifemaker.com](mailto:orders@knifemaker.com)



Phone: 414-425-8221  
Fax: 414-425-7927